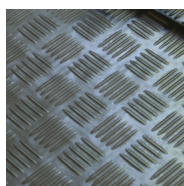


Industry mat Ergo Durk ESD

The workplace mat Ergo Durk is ESD-approved with the dimensions 1400 x 1000 mm, the work mat is a hard-wearing mat with a two-layer structure, which provides very good comfort. The surface has a modern industrial design that makes it non-slip and meets today's HSE requirements.

Nitricell's underside is springy and elastic and relieves feet, legs and back throughout the working day. The floor mat is ESD approved with the possibility of connection to ground.



Article.no

700x10000 mm	21-303-7001
1000x10000 mm	40-304-7001
1400x1000 mm	40-301-7001
2000x700 mm	40-302-7001

Size

Width	700/1000/1400/2000 mm
Depth	700/1000/10000 mm